

Jan-Peter Frahm

# Mosses and Liverworts of the Dominican Republic

- a picture book

Archive for Bryology Special Volume 9

2012

## Foreword

The Dominican Republic, together with Haiti part of the island of Hispaniola, has developed to a touristic place during the past twenty years and can easily be reached by plane from the United States or Europe. In contrast to many other regions in the Neotropics and especially to Haiti, the touristic infrastructure allows a relaxed stay and provides on easy way to get to know the Neotropical or especially the Carribean bryoflora. The altitudinal range up to the summit of Pico Duarte in 3175 m allows to study all vegetation types from the cocos plantations along the coast to elfin- and rain forests but also dry regions. The only disadvantage is that the touristic spots are located along the coast and trips to the higher interior of the island require hours of driving. A remarkable exception is Puerto Plata at the north coast, where one can easily go up to an elfin forest in more than 700 m altitude directly from the town by cable car. In spite of these advantages, the Dominican Republic remains bryologically poorly studied. A summary of the bryological exploration and an overlook over the relevant literature is given by Frahm (2012), who provides an updated enumeration of the mosses of Hispaniola, in which 416 species are listed. In addition, Schäfer-Verwimp & Pócs (2009) list 191 species of hepatics (of which 138 were reported for the first time).

Two weeks of holidays in February and March 2012 gave the chance to get a first idea of the bryoflora of the Dominican Republic. During that trip, photographs of many species were taken, which may give an impression of the local bryoflora. Thus the compilation of pictures may serve as a coffee table book but also as an aid for identification.

I wish to thank Alfons Schäfer-Verwimp for help with the identification especially of liverworts.

Frahm, J.-P. 2012. Additions to the bryoflora of the Dominican Republic. *Archive for Bryology* 138: 1-20.

Schäfer-Verwimp, A., Pócs, T. 2009. Contributions to the hepatic flora of the Dominican Republic, West Indies. *Acta Botanica Hungarica* 51: 367-425.

MOSSES



*Acroporium pungens*



*Atrichum angustatum*



*Barbula indica*





*Breutelia tomentosa*





*Breutelia* sp.



*Breutelia* sp.



*Calymperes* sp.





*Campylopus cygneus*



*Campylopus pilifer*



*Campylopus richardii*





*Campylopus shawii*





Chryso-Hypnum deminutivum



*Cyclodictyon varians*



*Entosthodon bonplandii*



Entodon macropus





*Erpodium domingense*



*Erpodium pringlei*



*Fissidens asplenioides*





*Helicodontium capillare*



*Hyophila involuta*



*Hypnum polypterum*

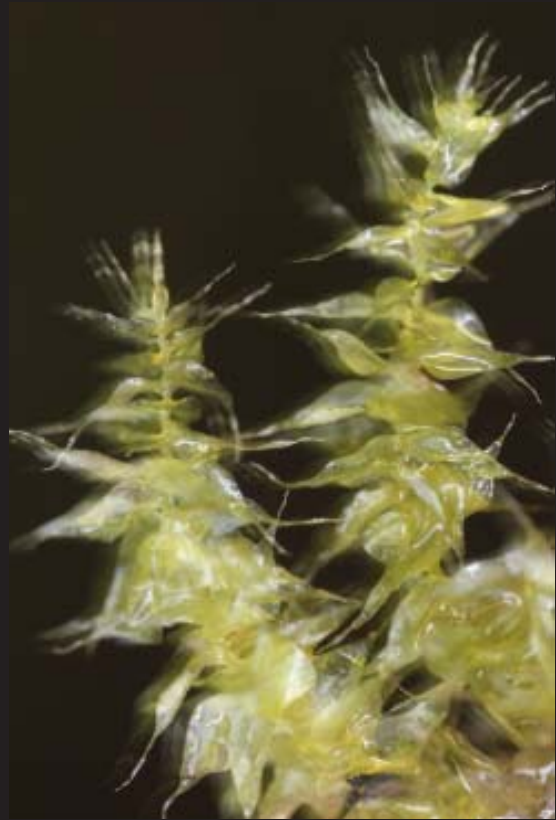




Leptodontium sp.

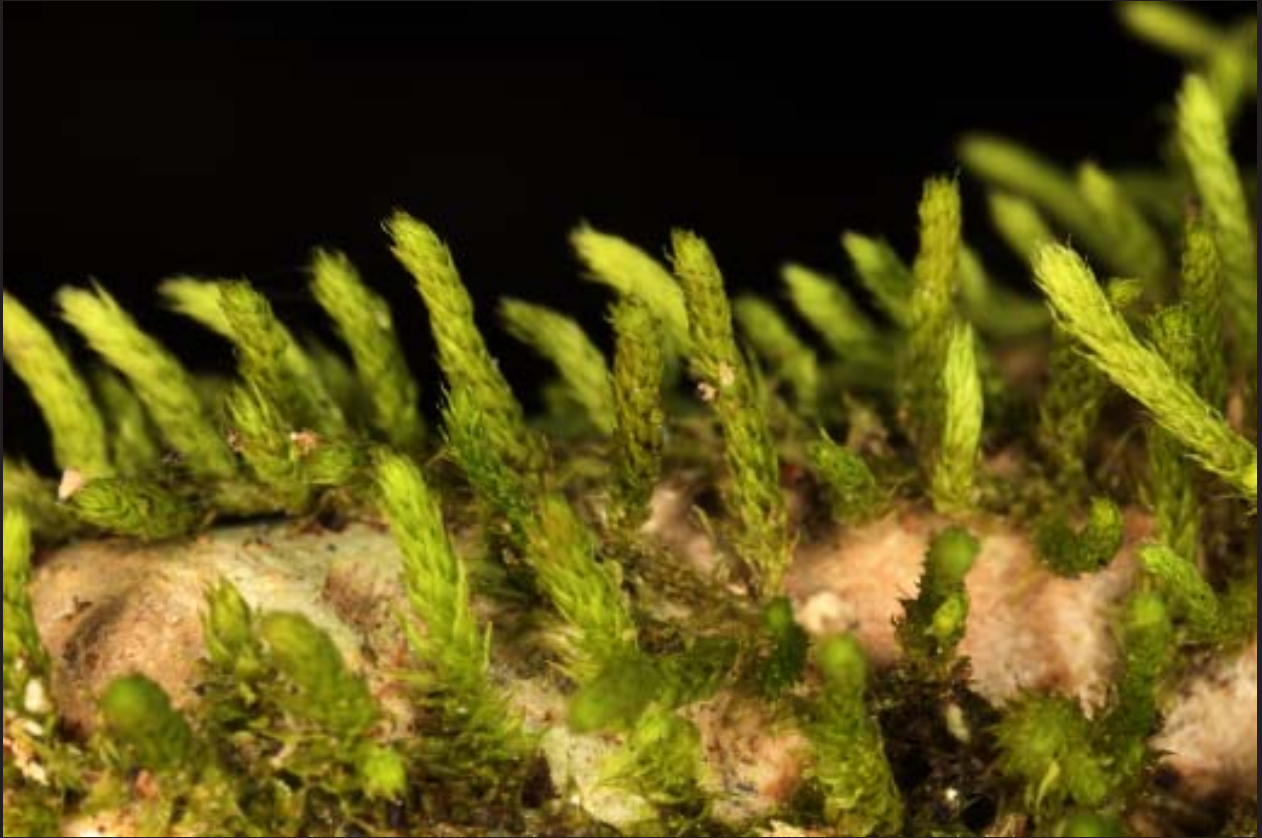


*Leucobryum giganteum*



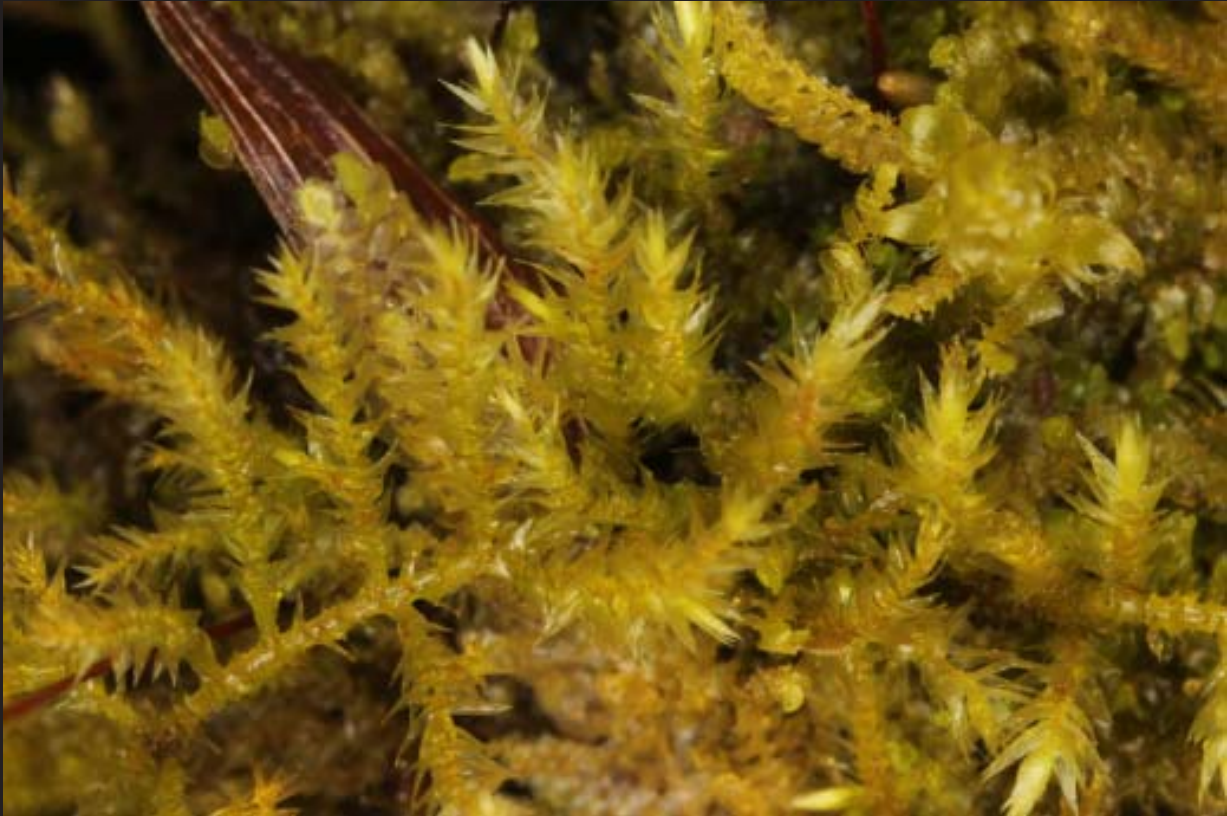
*Meteroridium remotifolium*





*Meteorium nigrescens*





*Mittenothamnium reptans*



*Neckeropsis undulata*



*Neocladiella pendula*





*Palamocladium leskeoides*





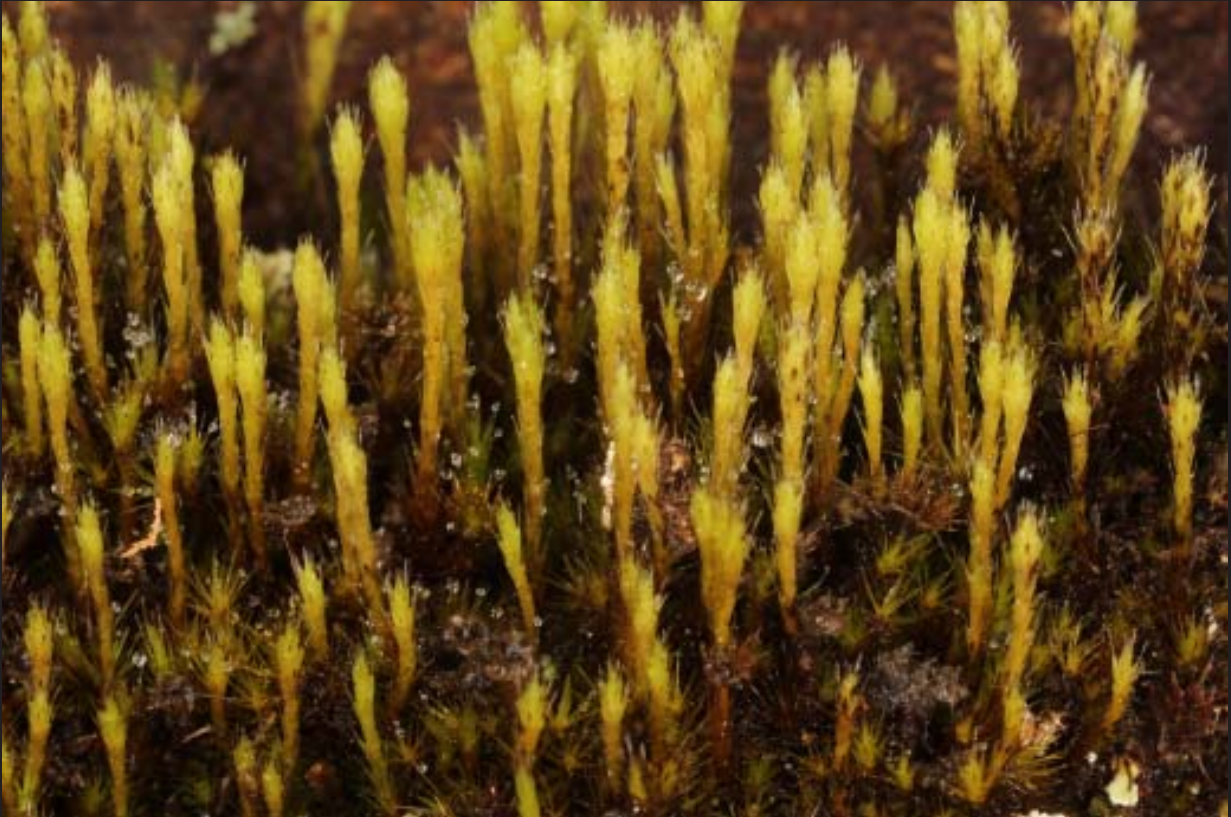
*Philonotis uncinata*



*Phyllogonium fulgens*



*Phyllogonium viride*



*Pilopogon guadeloupensis*





*Pilotrichella flexilis*



*Pinatella minuta*



*Pleurochaete luteola*



Pogonatum sp.





*Pogonatum* sp.



*Pogonatum pennsylvanicum*



*Polytrichum juniperinum*



*Porotrichodendron superbum*



*Porotrichum substriatum*



*Porotrichum substriatum*





Porotrichum sp.



*Prionodon densus*



*Pseudosymblepharis schimperiana*



*Pyrrhobryum spiniforme*





# LIVERWORTS





*Aneura* sp.





*Anthoceros* sp.



*Anthoceros punctatus*



*Asterella dominicensis*



*Asterella elegans*





Calypogeia sp.





*Chiloscyphus coadunatus*



*Clasmatocolea vermicularis*



*Cyclolejeunea convexistipula*

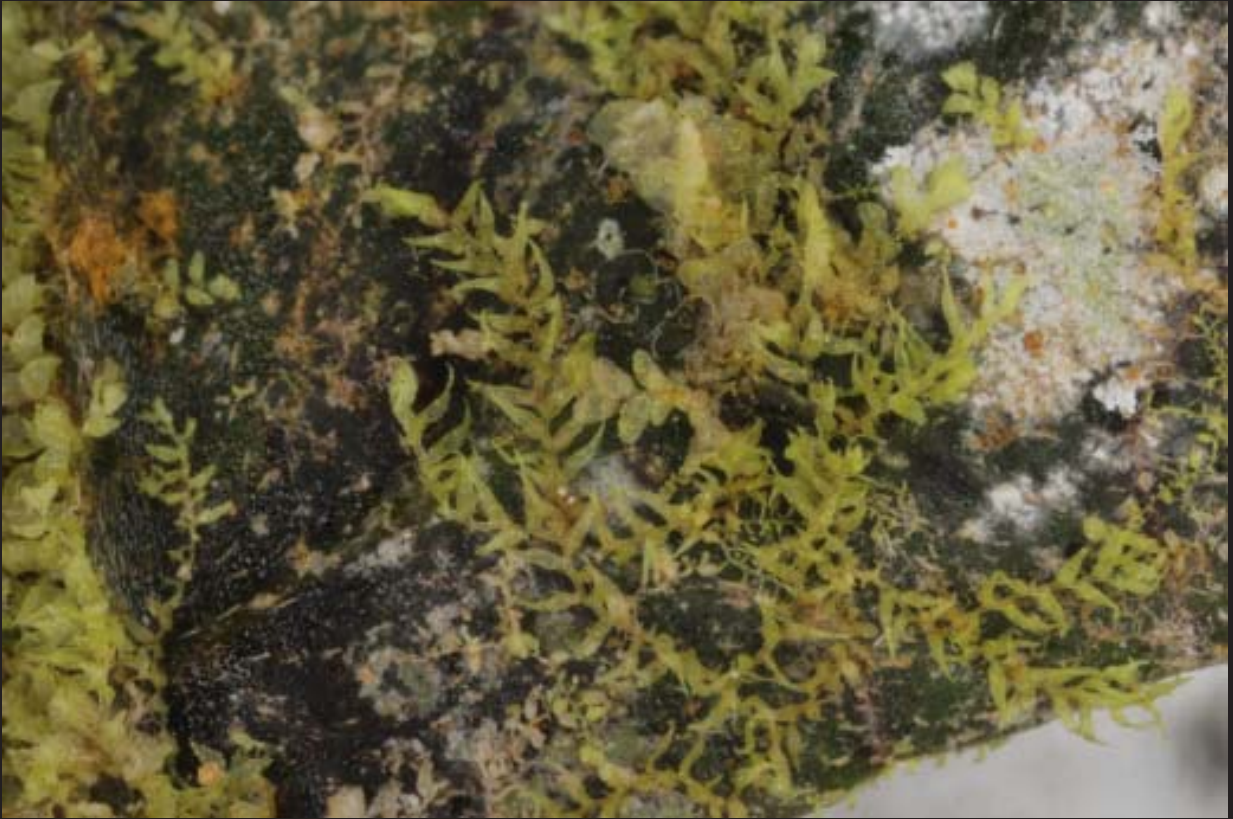


*Dendroceros crispus*





*Drepanolejeunea* cf. *inchoata*



*Drepanolejeunea* cf. *mosenii*



*Dumortiera hirsuta*





*Fossombronia porphyreorhiza*





*Frullania atrata*



Gongylanthus sp.



*Herbertus divergens*





*Herbertus divergens*



*Herbertus juniperoideus*





*Jamesoniella rubricaulis*



*Lejeunea cerina*



*Lejeunea laetevirens*



*Lethocolea glossophylla*





*Marchantia chenopoda*



*Monoclea gottschei*



*Notothylas breutelia*





*Odontolejeunea lunulifolia*





*Omphalanthus filiformis*



*Pallavicinia lyellii*



Plagiochila spp.



*Plagiochila* spp.



*Plagiochila adianthoides*





*Plagiochila* sp.



Plagiochila sp.



*Plagiochila* cf. *heterophylla*



*Plagiochila raddiana*



